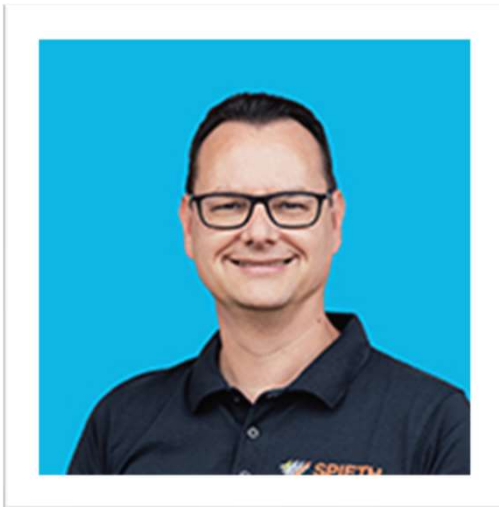




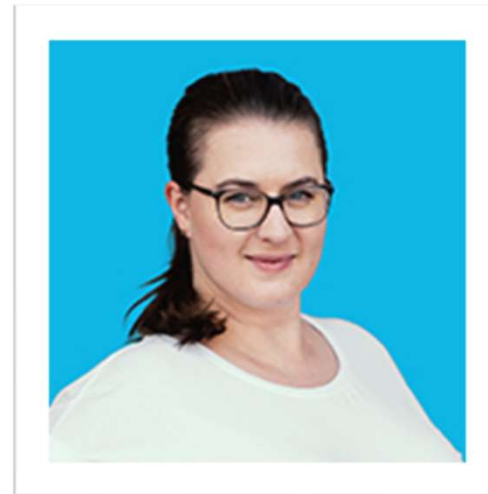
WELCOME!



Managementteam at SPIETH



Thomas Bitterling
Head of Operations



Jeanette Grau
Head of Sales & Marketing





What`s new?

1. Key facts about SPIETH
2. Key facts about ABEO



How does the organization of SPIETH look like?





Locations of SPIETH

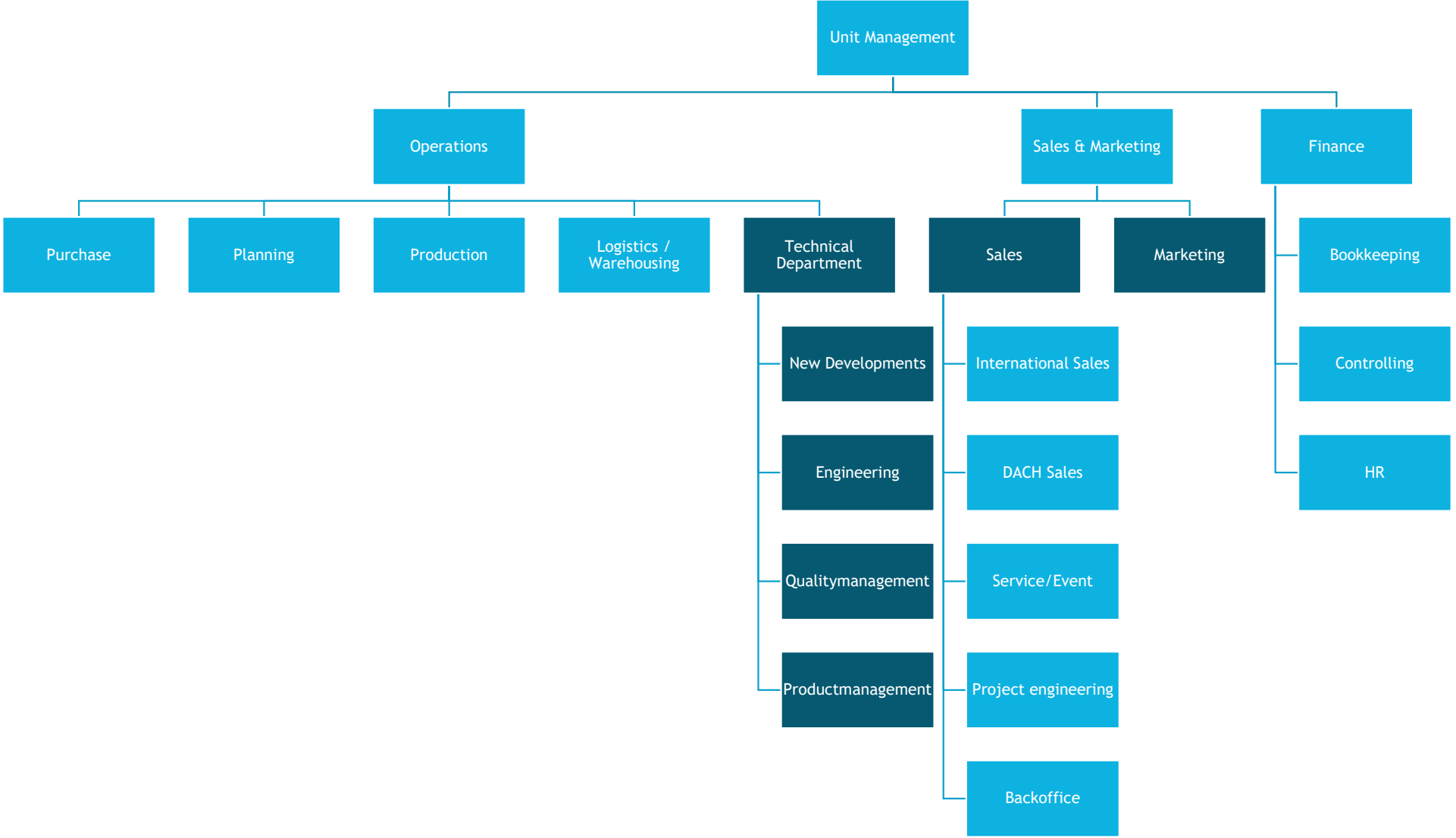


Headquarter
Altbach



Warehouse







Who's the team working at SPIETH?





58 employees



18% female



82% male



Average age 42





We reach the maximum for you!





What about the „two SPIETHs“?





Who is SPIETH America?

- Originally a Canadian company with which SPIETH had been working since the early 1970s, the SPIETH and Anderson families formed a joint venture.
- Nowadays SPIETH America is located in both, USA and Canada to support customers individually in their homemarkets.
- Since 2022 officially Partner of USA Gymnastics and supplies all national competitions with equipment
- Part of the ABÉO Group





Two companies - one brand

Create one unique logo for SPIETH America
and SPIETH Gymnastics that

- Represents the brand SPIETH
- Is recognizable in every environment





Link to Rebranding Video: <https://www.youtube.com/watch?v=JCWwK7WIMxw>





How do we support your business?





Core Values

Highest Quality standards to assure safety of our equipment
- certified by various institutions like FIG and TÜV

Being a reliable partner to our customers across the world

Preserving history while shaping the future - since 1831

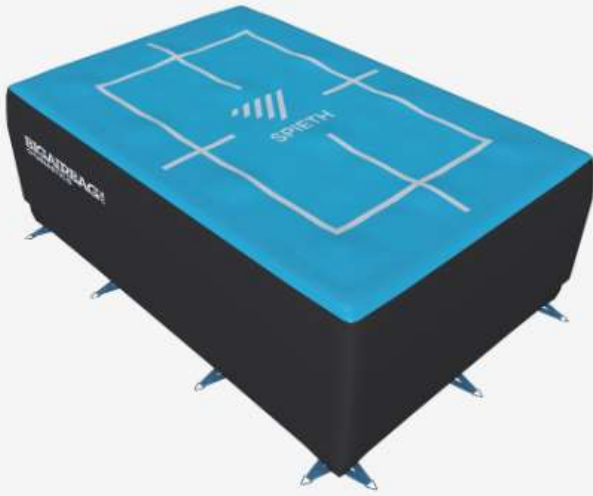
Reliable high processes standards - certified by ISO 9001

Committing to CSR goals by executing e.g. ISO 14001





New assortments





Events



Creating references all over the World

Keeping the brand strong

Increase demand for SPIETH products worldwide

Being a partner to many federations, f.e. FIG, EG, PAGU, USAG,DTB,KNGU,...





 **SPIETH**





What's next at SPIETH?





With our northern American colleagues we keep working on

- Strengthening our cooperation between the companies
- Training our teams to give the best support
- Focussing with SPIETH America on the USA and canadian markets
- Creating a global product portfolio

Moving to a new Logistic warehouse in Germany

- Larger facility ~3.800m² in Esslingen
- Close to headquarter in Altbach (approx. 2km)





Growing our business together with you

- Strengthening dealer network
- Growing teams in Europe and North America
- Creating products and services that are matching the market needs
- Creating new assortments
- Equipping the biggest sporting events around the world



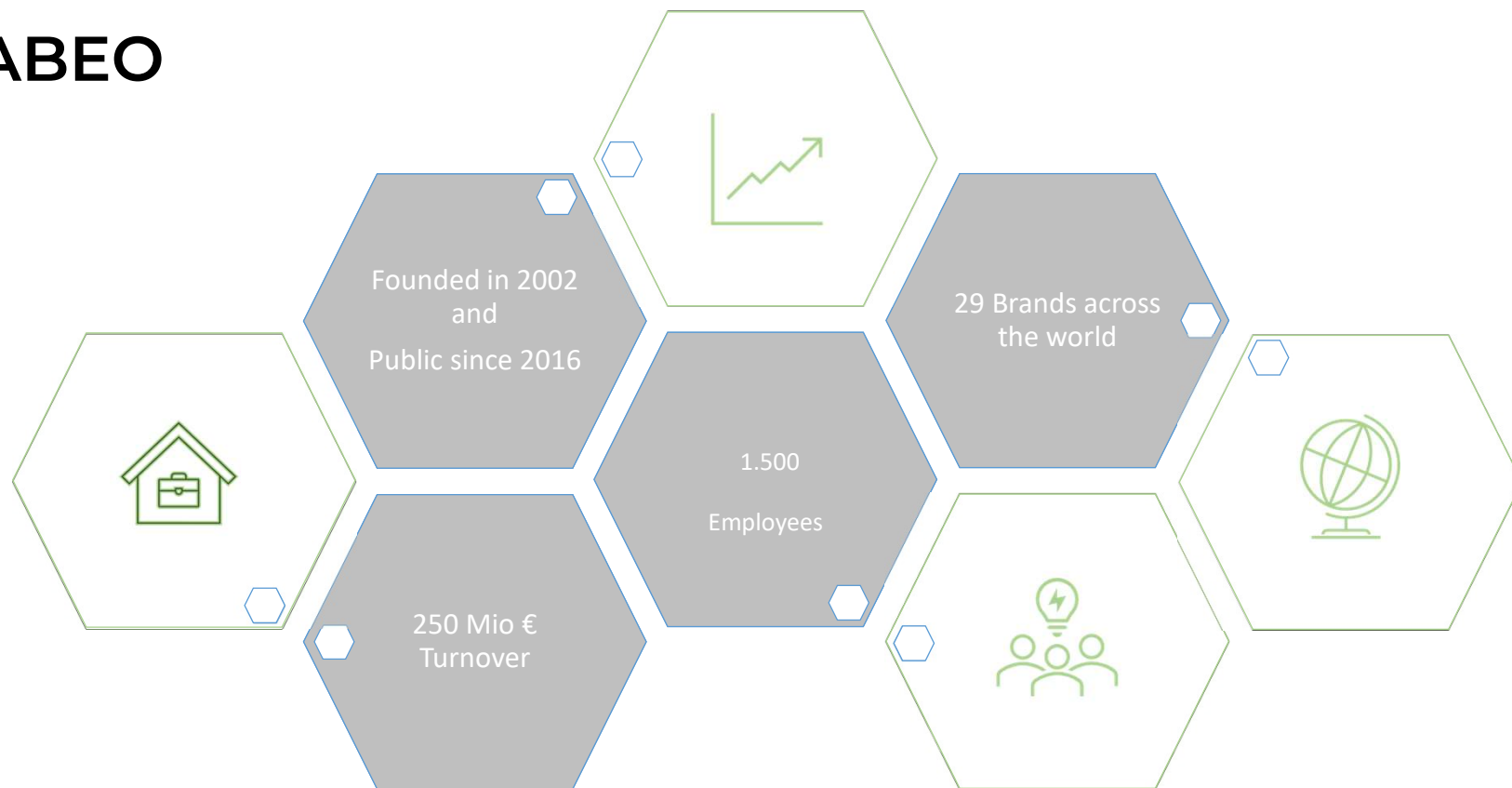
What`s new?

1. Key facts about SPIETH

1. Key facts about ABEO



ABEO





Organized in three divisions:





ABEO



Dirk van Esser



Jürgen Garziella



Willem Bouwman

THANK YOU!





ABEO VISION

We aim to be a global leader for sports and leisure equipment, ensuring we meet our clients`needs and expectations precisely.

We strive to be a key player in developing sports and leisure activities from grassroots right up to top-level competitions.



THANKS FOR YOUR
ATTENTION.

 **SPIETH**

IGN